

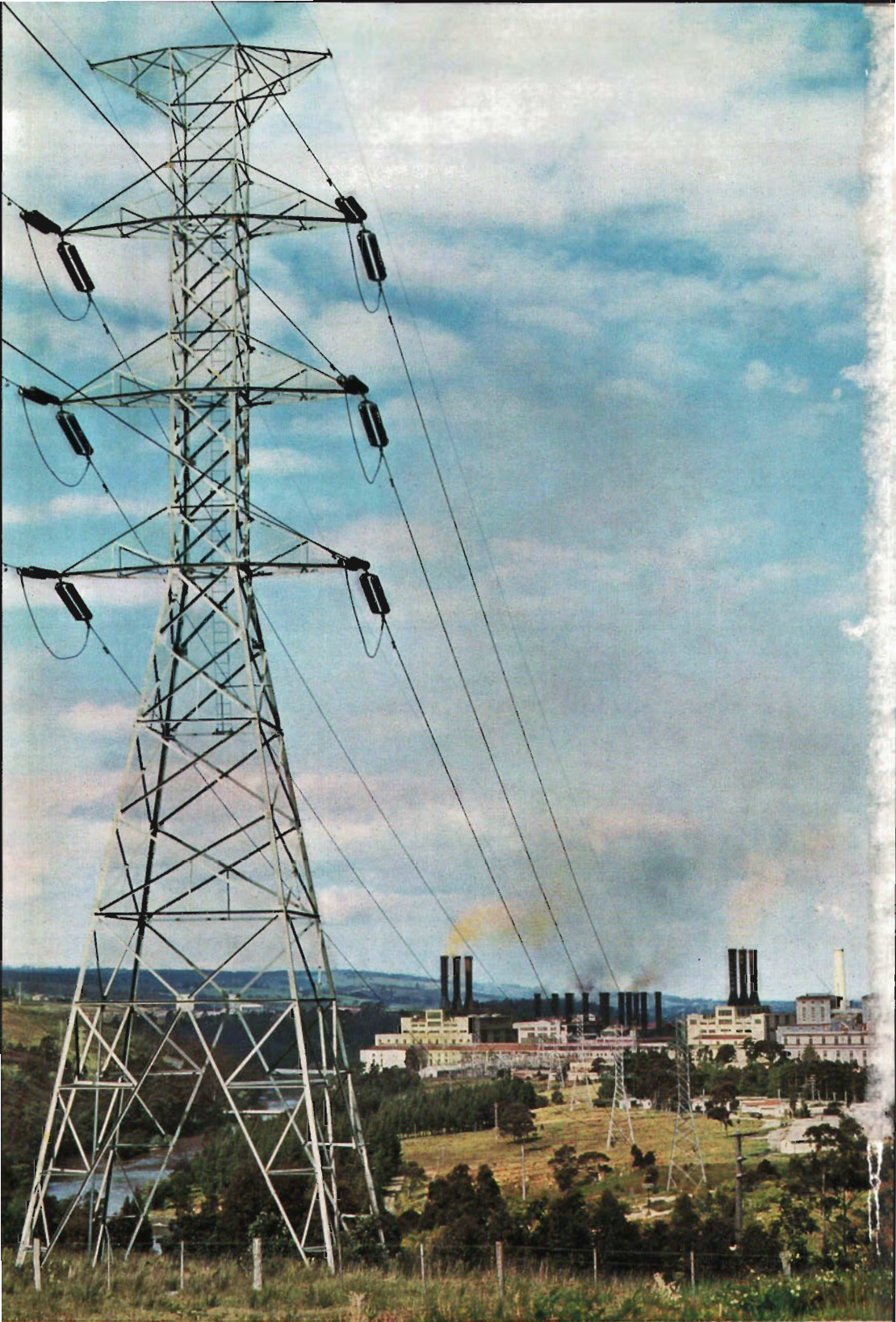
VICTORIAN YEAR BOOK 1965

No. 79

This page was added on 11 January 2013 to include the Disclaimer below.
No other amendments were made to this Product

DISCLAIMER

Users are warned that this historic issue of this publication series may contain language or views which, reflecting the authors' attitudes or that of the period in which the item was written, may be considered to be inappropriate or offensive today.



[State Electricity Commission of Victoria

Yallourn Power Station on the Latrobe Valley brown coal fields is at present the principal base-load power station in the State Electricity Commission's inter-connected generating system now serving nearly 98 per cent. of Victoria's population.

VICTORIAN YEAR BOOK 1965

V. H. ARNOLD, F.I.A.

*Deputy Commonwealth Statistician
and
Government Statist for Victoria*

No. 79

PERIODICALS SECTION,
DARWIN COMMUNITY
COLLEGE L.R.C.
21 JUL 1978

Melbourne

COMMONWEALTH BUREAU OF CENSUS AND STATISTICS

Victorian Office

1965

DARWIN COMMUNITY COLLEGE L.R.C.

By Authority :

A. C. BROOKS, GOVERNMENT PRINTER, MELBOURNE

Registered at the General Post Office, Melbourne,
for transmission through the post as a book.
Wholly set up and printed in Australia.

CONTENTS

<i>Part</i>	<i>Page</i>
PREFACE	
ACKNOWLEDGMENTS	
1. PHYSICAL ENVIRONMENT	
Palaeontology of Victoria	1
Geographical Features	25
Physical Geography	48
Climate	52
2. GOVERNMENT AND ADMINISTRATION	
Constitution	71
Government	75
Parliament	76
Electoral System	92
Government Administration	100
3. DEMOGRAPHY	
Population	107
Vital Statistics	150
4. SOCIAL CONDITIONS	
Cultural and Recreational	181
Education	201
Health and Medical Research	242
Social Welfare	278
Justice and the Administration of Law	316
Housing and Building	345
5. LOCAL GOVERNMENT	
Administration	371
Statistics of Local Government	389
Semi-Governmental Authorities	402
State Development and Regional Planning	429
6. WAGES, EMPLOYMENT, AND PRICES	
Industrial Conditions	431
Wages	453
Employment and Unemployment	464
Prices	473

CONTENTS—*continued*

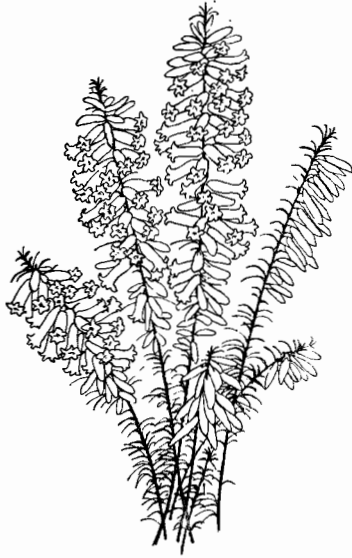
<i>Part</i>	<i>Page</i>
7. PRIMARY PRODUCTION	
Land Settlement and Irrigation	479
Agricultural Education, Research, and Extension ..	503
Farming	504
Primary Industries Other than Farming	550
Value of Production	564
 8. MANUFACTURING INDUSTRY	
Development of Secondary Industry.. .. .	569
Manufacturing Activity	573
Individual Industries	606
 9. FINANCE	
Public Finance	631
Private Finance	670
 10. TRADE, TRANSPORT, AND COMMUNICATIONS	
Retail Trade	715
Oversea and Interstate Trade	719
Transport.. .. .	737
Communications	778
 APPENDIX A .. Latrobe Valley	791
APPENDIX B .. Australian National Accounts	798
APPENDIX C .. Principal Events from 1st July, 1963 to 30th June, 1964 ..	806
APPENDIX D .. Index of Special Articles in the Previous Editions of the Victorian Year Book ..	807
APPENDIX E .. Index of Maps in the Previous Editions of the Victorian Year Book	809
APPENDIX F .. Select Bibliography of Books Published in Victoria, 1963-64	809
APPENDIX G .. List of Victorian Statistical Publications	813
INDEX	815

LIST OF PHOTOGRAPHS

View towards Yallourn	Frontispiece
Palaeontology of Victoria	Facing 18
Victoria Today	Facing 370
Latrobe Valley	Facing 626

LIST OF MAPS, DIAGRAMS, AND GRAPHS

	<i>Page</i>
FIGURE 1 .. Geological Chart	3
FIGURE 2 .. Victoria's Water Resources and River Basins	32
FOLDING MAP .. Victoria's Rivers, Lakes, and Catchments	Facing 34
FIGURE 3 (a) .. Position of Lake Systems in Victoria ..	36
3 (b) .. Western District Lakes	36
3 (c) .. Mallee-Wimmera Lakes	37
3 (d) .. Gippsland Lakes	37
FIGURE 4 .. Physiographic Divisions of Victoria ..	49
FIGURE 5 .. Annual Rainfall Map of Victoria for 1963	55
FIGURE 6 .. Average Annual Rainfall Map of Victoria ..	56
FIGURE 7 .. Rainfall Reliability by Districts	60
FIGURE 8 .. District Monthly Rainfall in Victoria : Average and 1963	68
FIGURE 9 .. State Electoral Provinces for Legislative Council	93
FIGURE 10 .. State Electoral Districts for Legislative Assembly	94
FOLDING MAP .. Statistical Divisions of Victoria .. Facing	126
FIGURE 11 .. Engineering Courses in Technical Schools, 1965	213
FIGURE 12 .. Graph showing Number of New Houses Classified according to Ownership ..	352
FIGURE 13 .. Graph showing Percentage Number of Houses Commenced Classified according to Materials of Outer Walls ..	353
FIGURE 14 .. Counties and Statistical Districts of Victoria	506
FIGURE 15 .. Graph showing Value of Factory Output ..	585
FIGURE 16 .. Graph showing Number of Factories and Value of Production Classified according to Number of Persons Employed, 1962-63	585
FIGURE 17 .. High Voltage Transmission of Electricity in Victoria	626
FIGURE 18 .. Melbourne Share Price Index	711
FIGURE 19 .. Map showing Shipping Entrance to Melbourne and Port Berthage ..	746
FIGURE 20 .. Railway Map of Victoria	751
FIGURE 21 .. Graph showing New Motor Vehicle Registrations	766
FIGURE 22 .. Radio Navigation Map	776
FIGURE 23 .. National Television Network	782
FIGURE 24 .. Map showing the Location of the Latrobe Valley in Victoria	791
FIGURE 25 .. Latrobe Valley Sub-Region	792



The form of the Pink Heath, *Epacris impressa* Labill. was proclaimed by the then Governor of Victoria, General Sir Dallas Brooks, to be the Floral Emblem for the State of Victoria on 11th November, 1958. This plant was chosen as the result of a number of plebiscites made throughout Victoria by the Field Naturalists' Club of Victoria, the Tree Planters Association of Victoria, and the Metropolitan Press, over a period of some twenty years.

PREFACE

This seventy-ninth edition of the Victorian Year Book again aims to present as comprehensive a picture as possible of life in Victoria today. With continual change and development apparent in the community, the Year Book's aim is to depict major phases of activity and to outline significant trends as these become apparent.

To do this, it is necessary to preserve continuity—especially of statistical information—so that the Year Book's function as a tool of reference can be maintained unimpaired. However, as there is a limit to the amount of information which can be included in any one year, it becomes necessary to omit articles published in previous editions so as to make way for new ones which describe later developments. To facilitate reference to previous volumes, retrospective references are now an integral feature of each edition, both in the actual place where articles have appeared previously, and in the case of major articles, in Appendix D.

In the future, it is hoped to revise certain articles which have already appeared some years previously. This cyclical recurrence of subjects over the years, revised as appropriate, will ensure the continuity and accuracy of the descriptive as well as the statistical information in the Year Book.

The Victorian Year Book presents statistical information of a comprehensive nature. For the specialist reader, the Office publishes, and frequently expands, its wide range of publications (listed in Appendix G). These publications incorporate the steadily increasing amount of statistical information and are available on application as shown.

The material in the Year Book has been carefully checked throughout, but I shall be grateful to those who will be kind enough to point out defects or make suggestions.

Readers requiring the main statistical information of the Year Book in a concise form are referred to the Victorian Pocket Year Book which is usually published in July of each year.

In view of the number of persons and institutions involved in the preparation of the Year Book, I have expressed my thanks to them in detail in the following pages.

V. H. ARNOLD

*Deputy Commonwealth Statistician
and Government Statist*

Commonwealth Bureau of Census and Statistics,
Victorian Office,
8 Elizabeth-street,
Melbourne, C.1.
February, 1965.

ACKNOWLEDGMENTS

The preparation of this Victorian Year Book has been a complex undertaking which would not have been possible without the willing co-operation of many persons and institutions in the community.

First, I wish to thank members of my own staff who have pursued their task with great enthusiasm and have again endeavoured to make the Year Book a true reflection of Victoria's activities today. It has been edited by the Editor of Publications, Mr. H. L. Speagle, M.A., B.Ed. The revision, compilation, and tabulation of statistics have been the responsibility of the Assistant Deputy Commonwealth Statistician, Mr. F. W. Sayer, B.Com., and the four divisional supervisors working under him :—Mr. N. Bowden, B.Ec., Primary and Secondary Production ; Mr. N. L. Dunstan, Business Statistics, Building, and Employment ; Mr. T. J. Fallon, B.A., F.I.A., Publications, Research and Development ; and Mr. G. E. Kitson, Demography, Social Conditions, Finance, Trade and Transport.

Secondly, my thanks are due to the many persons and institutions listed below who either supplied basic information for the various articles or advised on their preparation. Their suggestions in many cases made possible a continual revision of the scope as well as the contents of various articles.

Thirdly, I must thank the Government Printer and his staff for their interest, skill, and resourcefulness in printing this book.

The following persons and institutions assisted in the preparation of the articles :—

Part 1—Physical Environment

Australian National University—Department of Geography
Commonwealth Bureau of Meteorology
Department of Crown Lands and Survey
National Museum of Victoria—Mr. E. D. Gill
Natural Resources Conservation League
State Rivers and Water Supply Commission
Surveyor-General
University of Melbourne—
 Department of Geography
 Department of Geology

Part 2—Government and Administration

Chief Electoral Officer
Clerk of Parliaments
Commonwealth Electoral Officer for Victoria
Crown Law Department
Messrs. Longmans, Green and Co. Ltd. (Maps)
Official Secretary to His Excellency, the Governor of Victoria
Premier's Department
Public Service Board
State Library of Victoria—Archives Division

Part 3—Demography

Aborigines Welfare Board
Department of Immigration
University of Melbourne—Department of History

Part 4—Social Conditions

Age, The
Alfred Hospital
Anti-Cancer Council
Australian Broadcasting Commission
Australian Broadcasting Control Board
Australian Red Cross Society (Victoria)
Baker Medical Institute
Cancer Institute Board
Catholic Education Office
Children's Court
Council of Adult Education
Council of Public Education
Dental Hospital
Education Department
Free Library Service Board
Department of Health
Mrs. A. V. Horne
Hospitals and Charities Commission
Housing Commission of Victoria
Lansdowne Press Pty. Ltd.
Licensing Court
Lord Mayor's Fund
Melbourne City Council
Monash University
National Gallery of Victoria
National Parks Authority
Prothonotary of the Supreme Court
Public Solicitor
Repatriation Department
Royal Botanic Gardens
Royal Melbourne Institute of Technology
Royal Women's Hospital
St. Vincent's Hospital
Science and Technology Careers Bureau
Department of Social Services
Social Welfare Department
State Library of Victoria
Swinburne Technical College
Town and Country Planning Board
University of Melbourne—
 Conservatorium of Music
 Faculty of Law
 Vice Chancellor
Victoria Police
Victorian Bush Nursing Association
Victorian College of Pharmacy
Victorian Headmasters' Conference
Victorian Headmistresses' Association
Walter and Eliza Hall Institute of Medical Research

Part 5—Local Government

Ballarat Water Commissioners and Sewerage Authority
Country Fire Authority
Country Roads Board
Geelong Waterworks and Sewerage Trust
Latrobe Valley Water and Sewerage Board
Local Government Department
Melbourne City Council
Melbourne and Metropolitan Board of Works
Premier's Department—Division of State Development
State Rivers and Water Supply Commission

Part 6—Employment, Wages, and Prices

Department of Labour and Industry

Part 7—Primary Production

Department of Agriculture
Australian Wheat Board
Commonwealth Development Bank
Department of Crown Lands and Survey
Fisheries and Wildlife Department
Forests Commission
Grain Elevators Board
Mines Department
Rural Finance and Settlement Commission
Soil Conservation Authority
State Rivers and Water Supply Commission
University of Melbourne—School of Agriculture
Sir Samuel Wadham, Kt.

Part 8—Manufacturing Industry

Australian Consolidated Industries Ltd.
Department of Trade
Gas and Fuel Corporation
Premier's Department—Division of State Development
State Electricity Commission

Part 9—Finance

Australia and New Zealand Bank Ltd.
Australian Bankers Association
Commonwealth Banking Corporation
Council of Fire and Accident Underwriters
Public Trustee
Registrar of Companies
Registrar of Probates
Registrar-General of Titles
Reserve Bank of Australia
State Savings Bank of Victoria
Stock Exchange of Melbourne
Surveyor-General
Trustee Companies Association

Part 10—Trade, Transport, and Communications

Department of Civil Aviation (Victoria–Tasmania Region)
Geelong Harbor Trust Commission
Melbourne Harbor Trust Commissioners
Melbourne and Metropolitan Tramways Board
Overseas Telecommunications Commission
Port Phillip Pilots Service
Portland Harbor Trust Commissioners
Postmaster-General's Department (Victoria)
Department of Trade
Traffic Commission
Transport Regulation Board
Victorian Railways Commissioners

APPENDIX A

Australian Paper Manufacturers Limited
Gas and Fuel Corporation
Gippsland Cement Co. Ltd.
Latrobe Valley Water and Sewerage Board
City of Moe
Shire of Morwell
Shire of Narracan
Premier's Department—Latrobe Valley Development Advisory
Committee
State Electricity Commission
Borough of Traralgon

V.H.A.